

Connecting to UI Wireless with Mac OS 10.5 Leopard

Note: Some issues have been identified with Mac OS 10.5 connecting to the UI Wireless network. University IT is continuing to test Leopard on UI Wireless but have not been successful connecting in some cases.

To configure AirPort for 802.1x connection to UI Wireless:

1. Select the configuration options by clicking on the AirPort Icon on your toolbar and selecting **Open Network Preferences**.

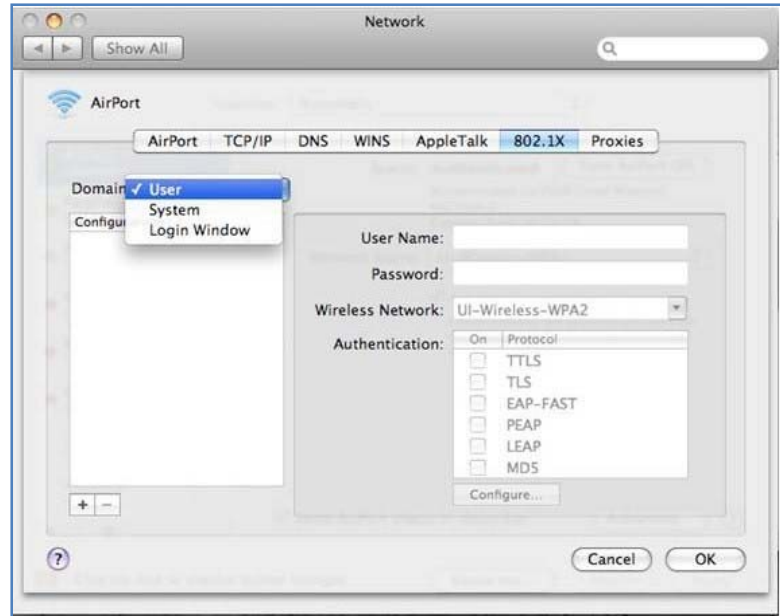


2. On the Network Preferences window, click on **AirPort** and select the **Advanced** button.



Connecting to UI Wireless with Mac OS 10.5 Leopard

3. Click on the **802.1X** option and select **User** in the **Domain** drop-down menu. Then click the plus (+) button in the lower-left corner.



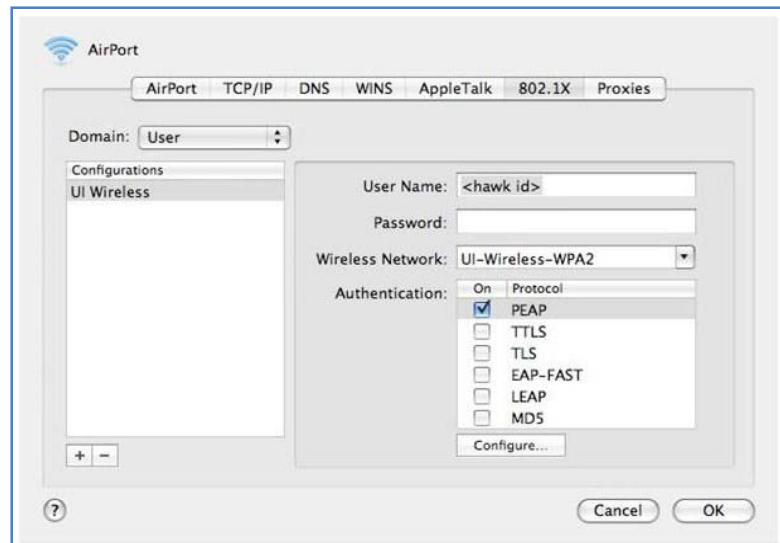
4. Enter the configuration options for **UI-Wireless-WPA2** in the fields.

Enter your Hawk ID in the **User Name** field.

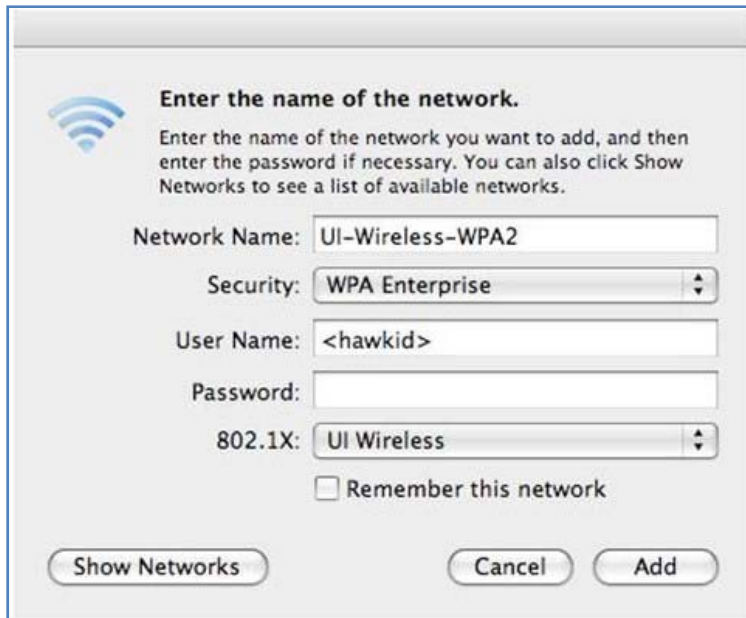
If you are in range of the **UI-Wireless-WPA2** network, make sure that it is selected in the drop down menu. Otherwise enter it in manually (make sure to capitalize UI, the 'W' in Wireless, and WPA2).

Check the **PEAP** box in the **Authentication** list.

Click **OK**.



Connecting to UI Wireless with Mac OS 10.5 Leopard



5. Click the AirPort option on the top of the Network Preferences window.

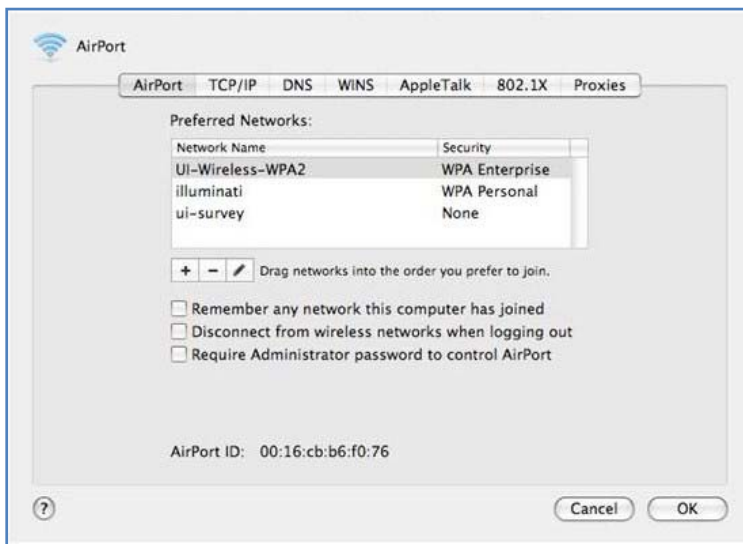
Enter **UI-Wireless-WPA2** for the **Network Name**.

Select **WPA Enterprise** from the **Security** drop-down list.

Enter your **Hawk ID** in the **User Name** field. (For security reasons, it is best to leave the Password field blank.)

Choose **UI Wireless** from the **802.1X** drop-down list.

Click **Add**.



6. Drag **UI-Wireless-WPA2** to the top of the **Preferred Network** list and click **OK**.

Note: After configuring the 802.1x connection and applying it in the AirPort interface, the Mac may appear connected, but it is not. You may need to turn off AirPort and turn it back on to force it to prompt you to enter your authentication credentials (Hawk ID and password). **This may occur each time after rebooting, as well.**

7. Click the AirPort icon on the top toolbar and choose **Turn AirPort Off**. Then click the AirPort icon again and choose **Turn AirPort On**. You should be prompted for your Hawk ID and password.