

UPDATING WINDOWS UPDATES

Because of its prevalence in the market, Microsoft Windows XP is vulnerable to structured attacks in the form of worms and viruses. Therefore, you will want to make sure you get the necessary updates to protect your computer; most of the updates are security measures to better protect your computer from “attack.”

You may be instructed to restart (or reboot) your computer put some updates into effect, so make sure you have closed all documents and programs prior to starting the updating process.

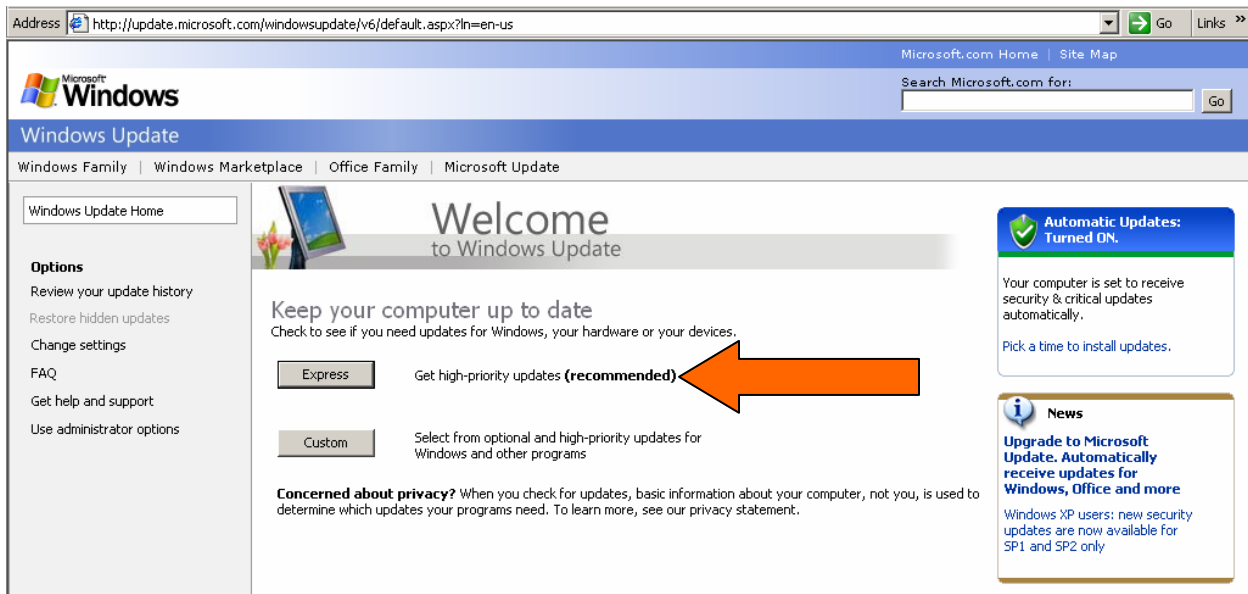
There are several ways to update your computer. The two most common:

1) THROUGH THE INTERNET:

While you can use the wireless network to download updates, it will go faster if you use a wired or LAN connection.

Go to www.windowsupdate.com

Select EXPRESS. You may be required to go through a “validation” with your laptop; Microsoft will scan the system to make sure its providing you with the best updates.



Once the system determines the necessary updates, it will list them. Most of these are security patches or updates to protect your computer. Select INSTALL UPDATES to begin the installation process.

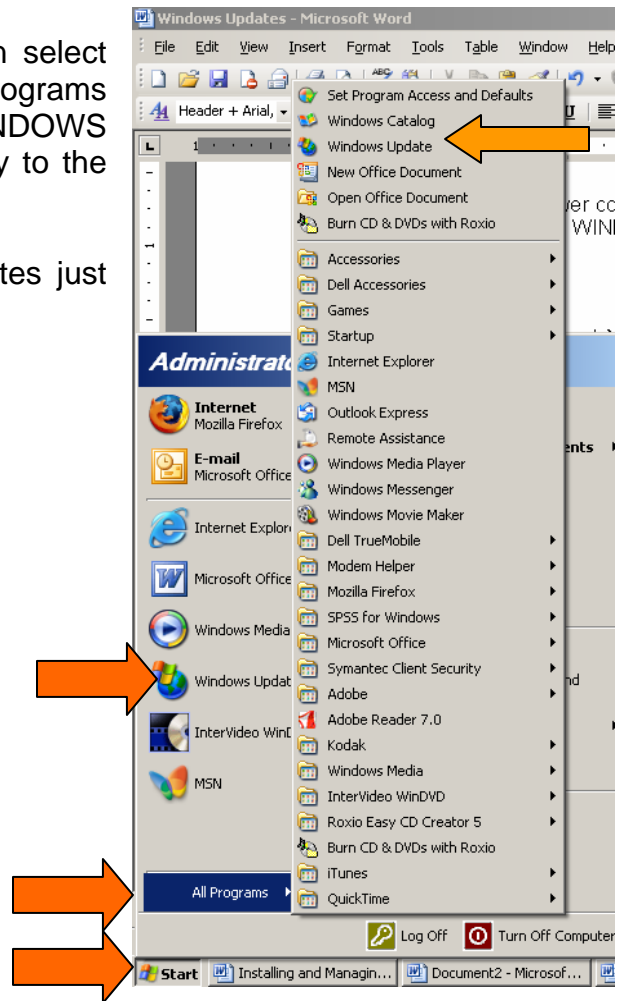
(You may be instructed to restart (or reboot) your computer put some updates into effect, so make sure you have closed all documents prior to starting the updating process.)

Installing WINDOWS Updates

2) THROUGH THE START MENU:

Select START in the lower corner, then select PROGRAMS. At the top of the list of programs is a select group of icons, including WINDOWS UPDATE. This link will take you directly to the website.

You may also see an icon to run updates just above the PROGRAMS link.



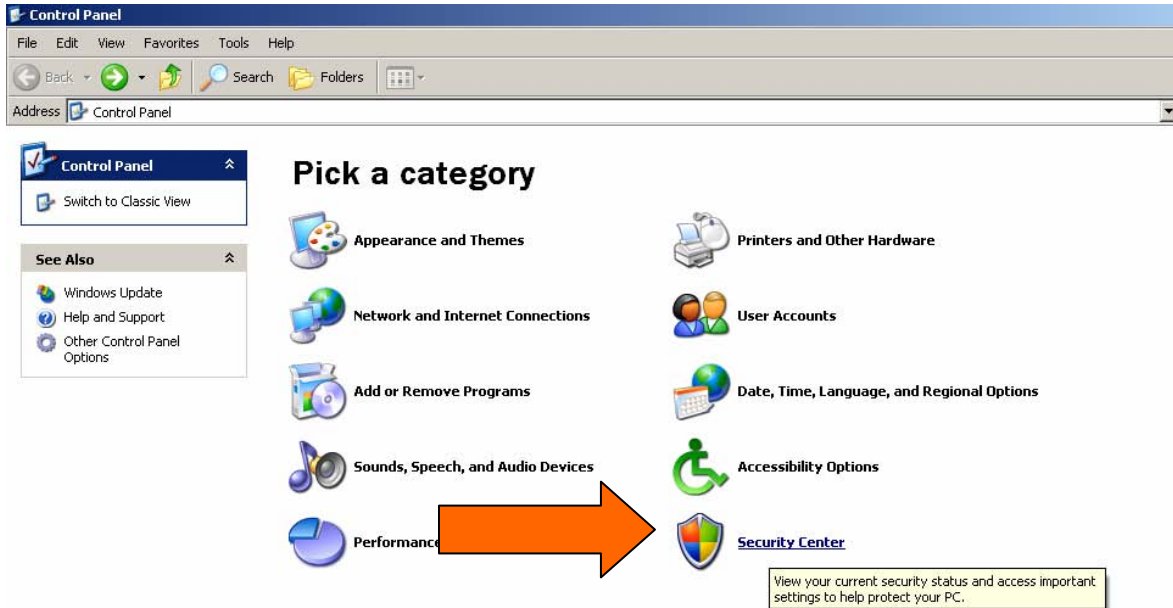
Installing WINDOWS Updates

To turn on automatic updates (for WINDOWS XP with Service Pack 2):

Go to START and select CONTROL PANEL.

In the **category view**:

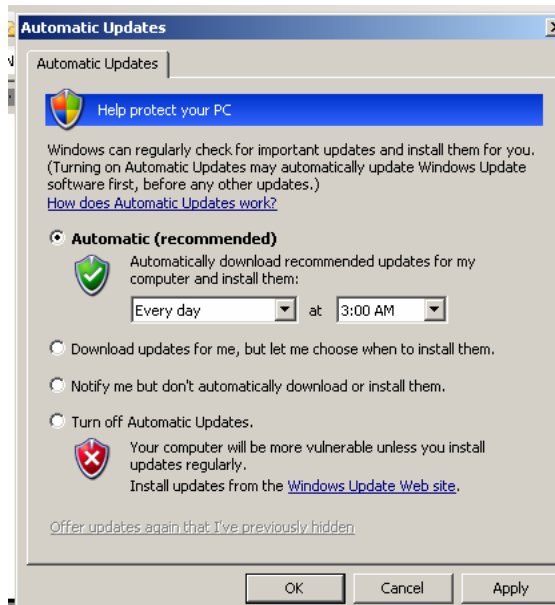
1) Select SECURITY CENTER:



2) If your automatic updates are on and set to the recommended setting, just exit the window. If not, select

MANAGE SECURITY SETTINGS FOR: AUTOMATIC UPDATES

Installing WINDOWS Updates



3) Select AUTOMATIC (RECOMMENDED) and leave the default setting (Every day at 3:00 a.m.)

In the **classic view**:

1) Select AUTOMATIC UPDATES and apply Step 3 above (select AUTOMATIC (RECOMMENDED)).