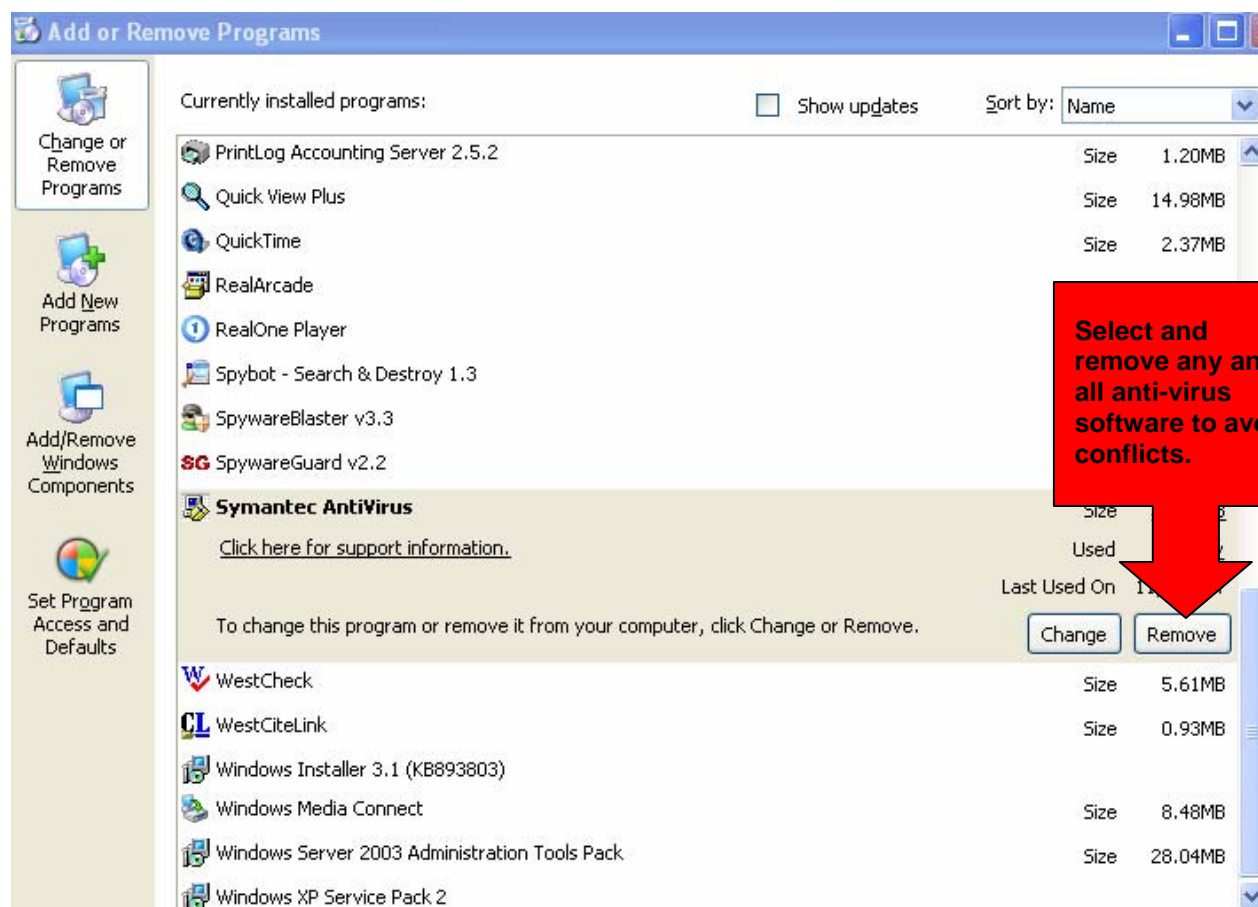


INSTALL SYMANTEC ANTI-VIRUS SOFTWARE

If you currently have an anti-virus software program, it may be a trial version, in which case the updates (the most important part) will expire in 30-60-90 days. **BEFORE INSTALLING NEW ANTI-VIRUS SOFTWARE**, delete all old versions of anti-virus software. Usually, this will be products with the commercial name SYMANTEC, NORTON, PC-CILLIN and MCAFEE.

Note: If you currently have an anti-virus program that you do NOT know how to manage, get rid of it and use Norton. We'll show you how to manage Norton.

Go to START>CONTROL PANEL>ADD OR REMOVE PROGRAMS



Once the uninstall is complete you must **REBOOT** your computer. This means Shut Down and then turn it back on.

Installing and Managing the University Anti-Virus Program

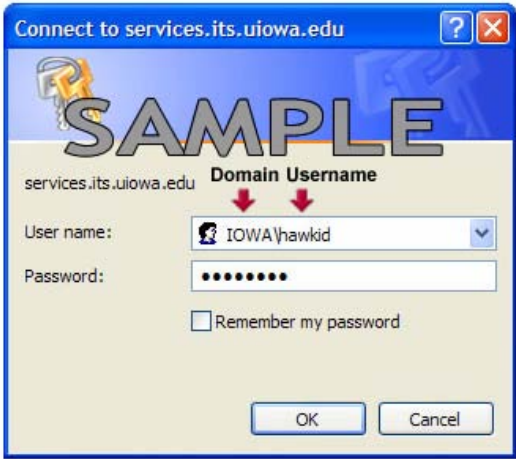
Symantec anti-virus software is available for Iowa students and staff. Go to <http://helpdesk.its.uiowa.edu> or use the CD available for check-out from the circulation desk.

At <http://helpdesk.its.uiowa.edu>, select "GET SOFTWARE." You must sign in to verify that you are a student/staff (and therefore authorized to get the software).

Following the sample, when signing in, enter

"IOWA\your HawkID" in the USER NAME box
"your HawkID" password in the PASSWORD box

Sign-In



Once signed in,
select the anti-virus software:

Campus Services

ITS Help Desk

ITS Home | Help Desk | ITS Departments | About ITS

ITS Help Desk | Support | Security | Get Software

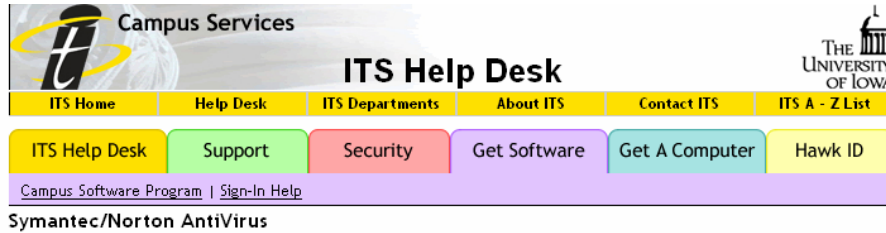
[Campus Software Program](#) | [Sign-In Help](#)

ITS Software Services

<p>AntiVirus Software - The University of Iowa has a site license with Symantec for their Symantec AntiVirus Corporate Edition suite. Clients are provided for Mac OS 8, 9, and OS X, and Windows 98/ME/NT4/2000/XP. Server platforms are also supported.</p> <p>More Information: Virus Center</p>	<p>AEGIS Client - The connect to the UI Wi password. Clients are Windows XP, both a s computers on Active</p> <p>More Information: Wi</p>
<p>Eudora - Eudora is a full-featured e-mail client available for all Windows and Mac platforms.</p> <p>More Information: E-mail Support</p>	<p>Host Explorer - Ho: 3270 emulation. This t to connect to and in highest level. This prc is currently at versior</p>
<p>WS_FTP - FTP (file transfer protocol) client for Windows that allows you to transfer files via the Internet.</p>	<p>Novell Client - The Networks. Clients are Windows platforms.</p>



Installing and Managing the University Anti-Virus Program



Symantec AntiVirus 10.0.1 for Windows 2000/XP

NOTE: The software license for Symantec AntiVirus does not cover UIHC faculty and staff home or office computers. For information about getting anti-virus software on home computers for these users, please contact the HCIS Help Desk at 335-6500.



This version has been customized from the original distribution. The customizations include:

- Uninstallation of previous versions of Symantec Antivirus Corporate Edition
- Configured to update virus definitions daily
- Configured to scan the computer once a week
- On 2000/XP Machines, limited users can run LiveUpdate

An uncustomized version of the Symantec installer is available. The entire Symantec AntiVirus 10.0.1 CD is available in both iso and zip format as well.

See the Previous Versions page if you require a version of Symantec AntiVirus for a Windows 98/ME/NT4 machine.

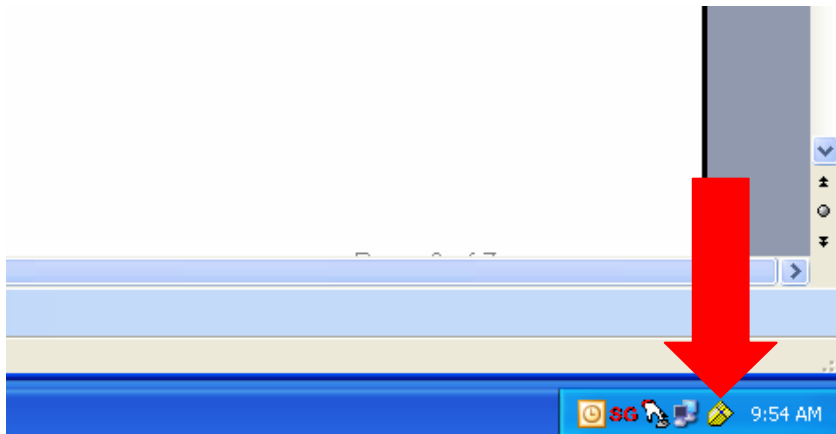
If using the ITS website link, DO NOT select the customized version (the purple DOWNLOAD button). The Law School recommends you instead install the *uncustomized* version.

Follow the INSTALL WIZARD to install the software.

For installation purposes, use the DEFAULTED choices (for example, you are a CLIENT, you want a COMPLETE install, and your system is UNMANAGED).

Once again, when the installation is complete, you must REBOOT your computer.

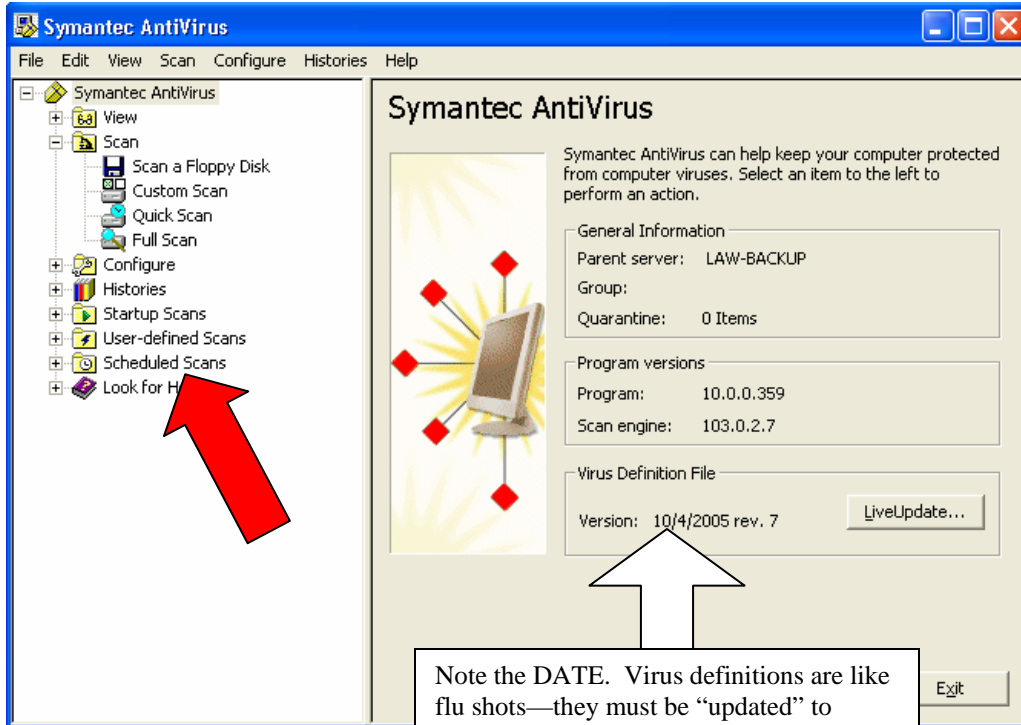
Once the software is loaded, an ICON for Norton/Symantec will appear in your task bar:



Select the icon (it looks like a little shield...) to open the software. (You can also open the software from the START>PROGRAMS menu.)

Installing and Managing the University Anti-Virus Program

We recommend that you set a weekly scan for your computer:



Note the DATE. Virus definitions are like flu shots—they must be “updated” to insure that they are protecting you from the latest “strains” of a virus or flu. Symantec should automatically update. If your virus definitions are more than 1 week old, you can update them by selecting the “LiveUpdate...” box while connected to the internet.

Follow the wizard to get the scan set up. We recommend a minimum of a weekly scan to make sure your computer is safe and uncompromised. Set the scan for a time when you know your computer will be on (some people actually set it to run during class); **you can minimize the scan and continue to use your computer while it runs.**

