

Windows XP WPA2 Wireless Network Setup

Total Setup Time may be **1 – 2 hours**.

- 1) Open Network Connections

Right Click any of your networking icons in your task bar and **Left Click Open Network Connections** as seen in Fig.1

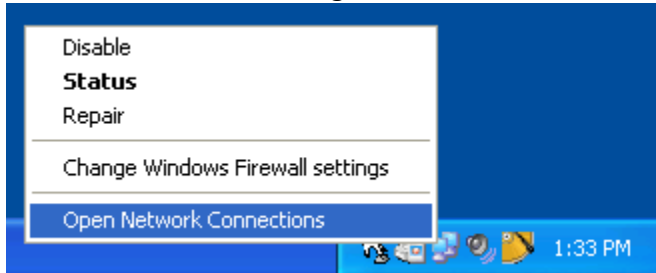


Fig. 1

- 2) **Right Click** your **Wireless Network Connection** and then **Left Click Properties**
- 3) In the **Wireless Network Connection Properties** window **Left Click** the tab called **Wireless Networks**. The window will look just like Fig. 2.

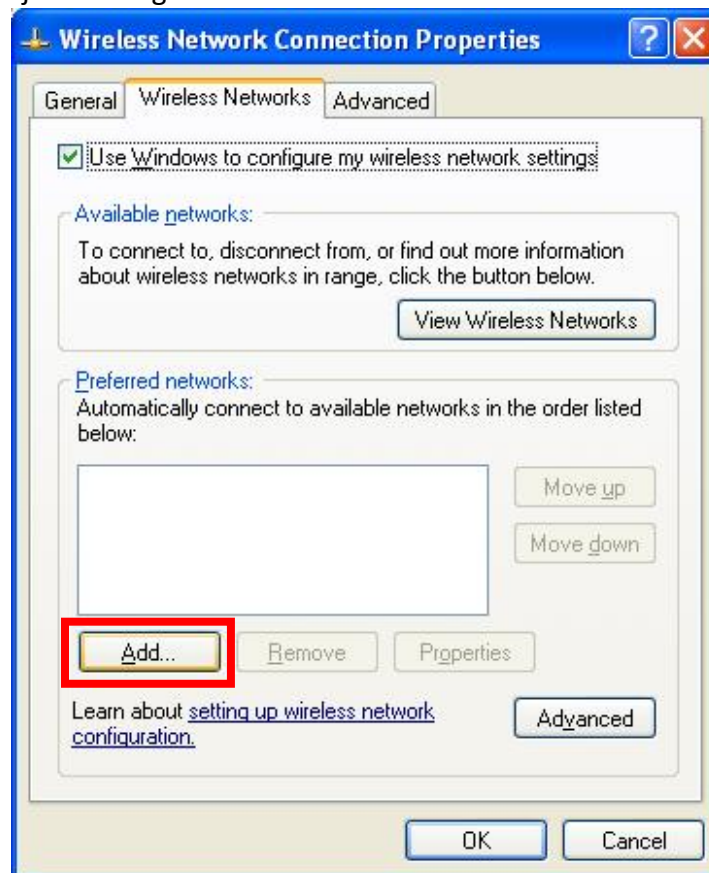


Fig. 2

- 4) Click the **Add... Button** highlighted in **Red** in Fig. 2

- 5) In the **Wireless network properties** window fill in the following information:
Network name (SSID) is UI-Wireless-WPA2.
Network Authentication is WPA2. **If WPA2 is unavailable please turn to page 6 for instructions for installing Windows Servicing Pack 3. If you have already followed those instructions and still do not see WPA2 please contact Jeremy or Darlene in room 130.**
Data encryption is set to AES.

The window will look just like Fig. 3.

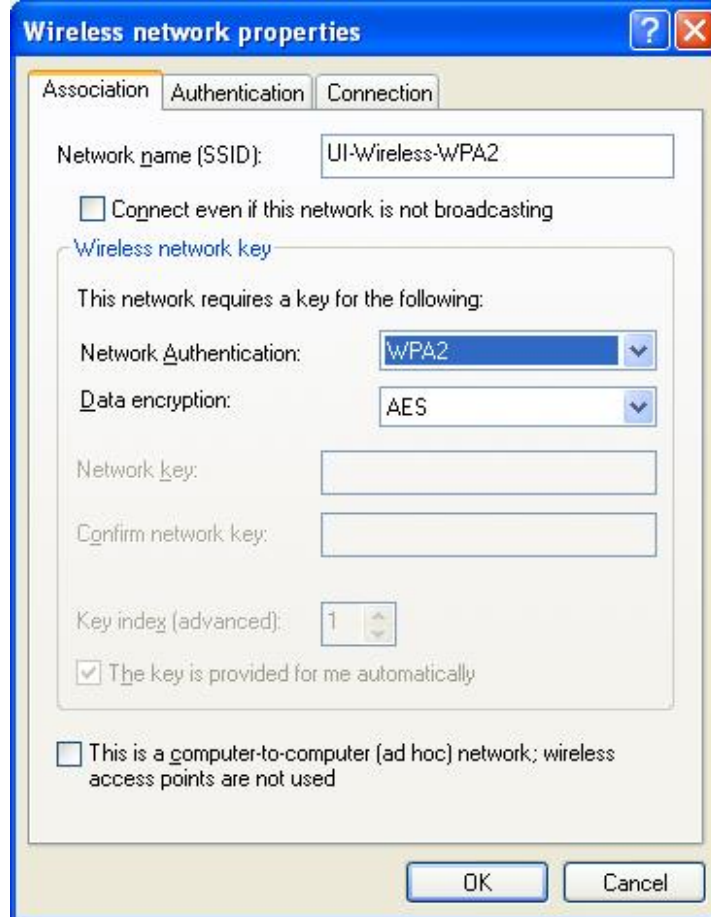


Fig. 3

- 6) **Left Click the Authentication Tab** and select the following:
EAP Type is Protected EAP (PEAP)
Your window should look just like Fig. 4.

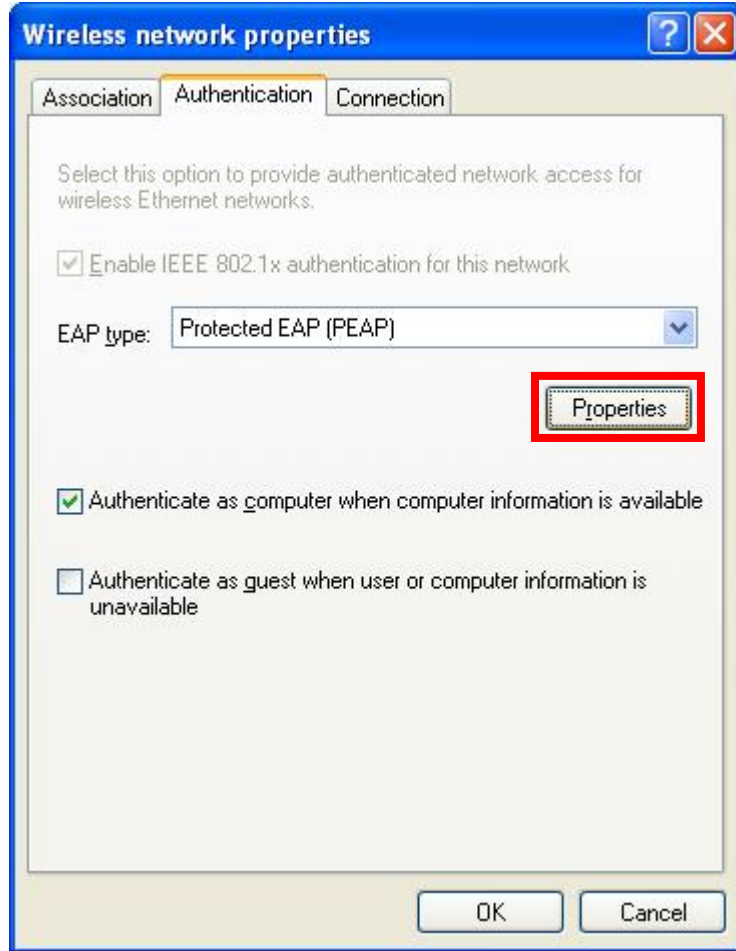


Fig. 4

- 7) **Left Click the Properties Box** highlighted in **Red** in Fig. 4.

- 8) In the **Protected EAP Properties Box** enter the following information:
Check **Validate server certificate** and **Connect to these servers**.
In the **Connect to these servers field** enter net-auth-1.its.uiowa.edu.
Check the box in front of **Thawte Premium Server CA** from the **Trusted Root Certificate Authorities list**.
Make sure that Secured password (EAP-MSCHAP v2) is selected in the Select Authentication Method list.

Your window will look just like Fig. 5.

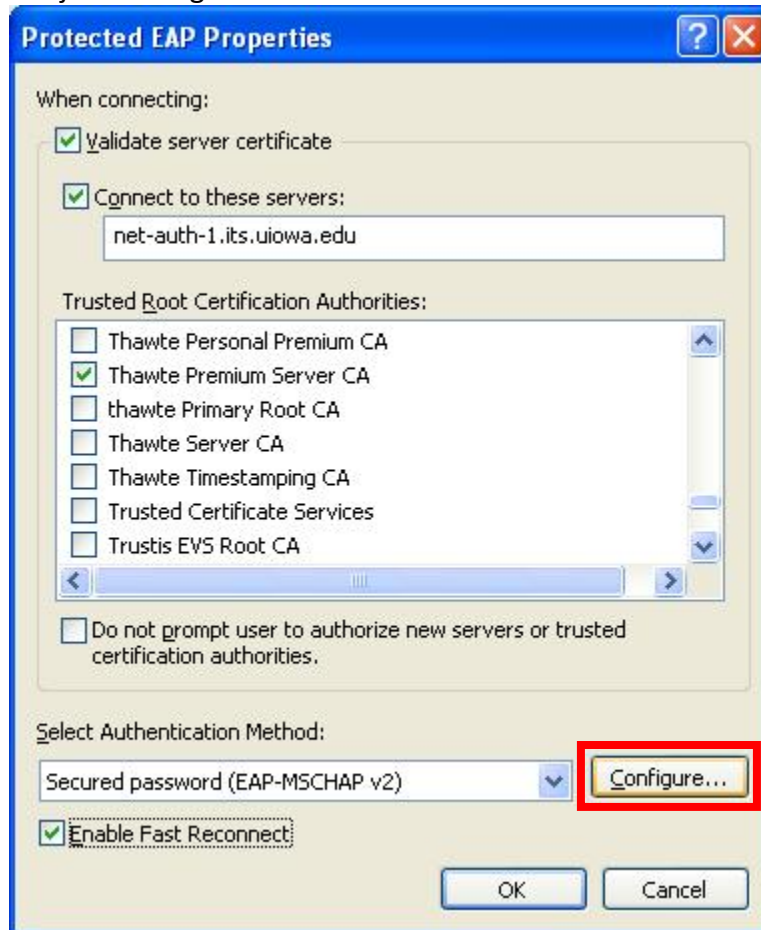


Fig. 5

- 9) Click the **Configure** button highlighted in **Red** in Fig. 5.
10) In the **EAP MSCHAP v2 Properties window** uncheck the box **Automatically use my...** as seen in Fig. 6 below.



Fig. 6

- 11) **Left Click OK** until you see the **Network Connections Window**.
- 12) A **Wireless Network Connection bubble** will show up in the Right-hand corner of your screen as seen in Fig. 7. **Left Click** this **bubble**.



Fig. 7

- 13) Enter your **User name (Hawk ID)** and **Password** as seen in Fig 8.

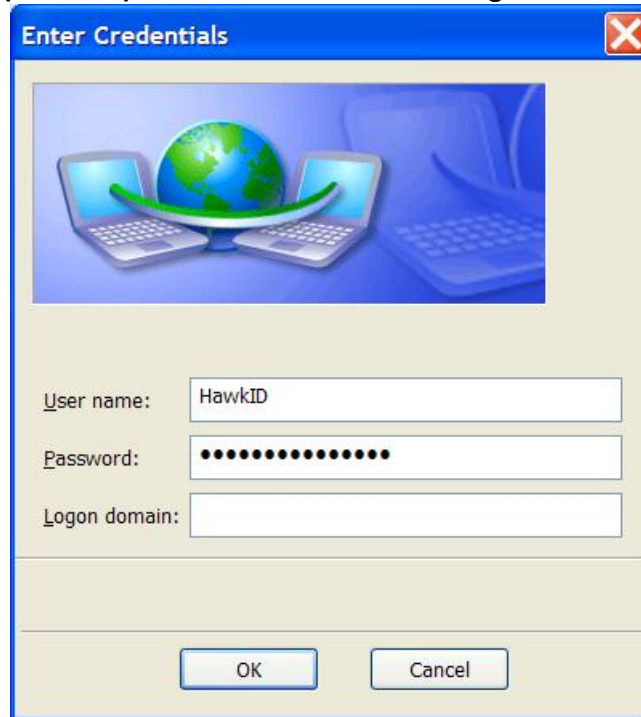


Fig. 8

- 14) You will now be **connected**.

Installing Windows XP Service Pack 3

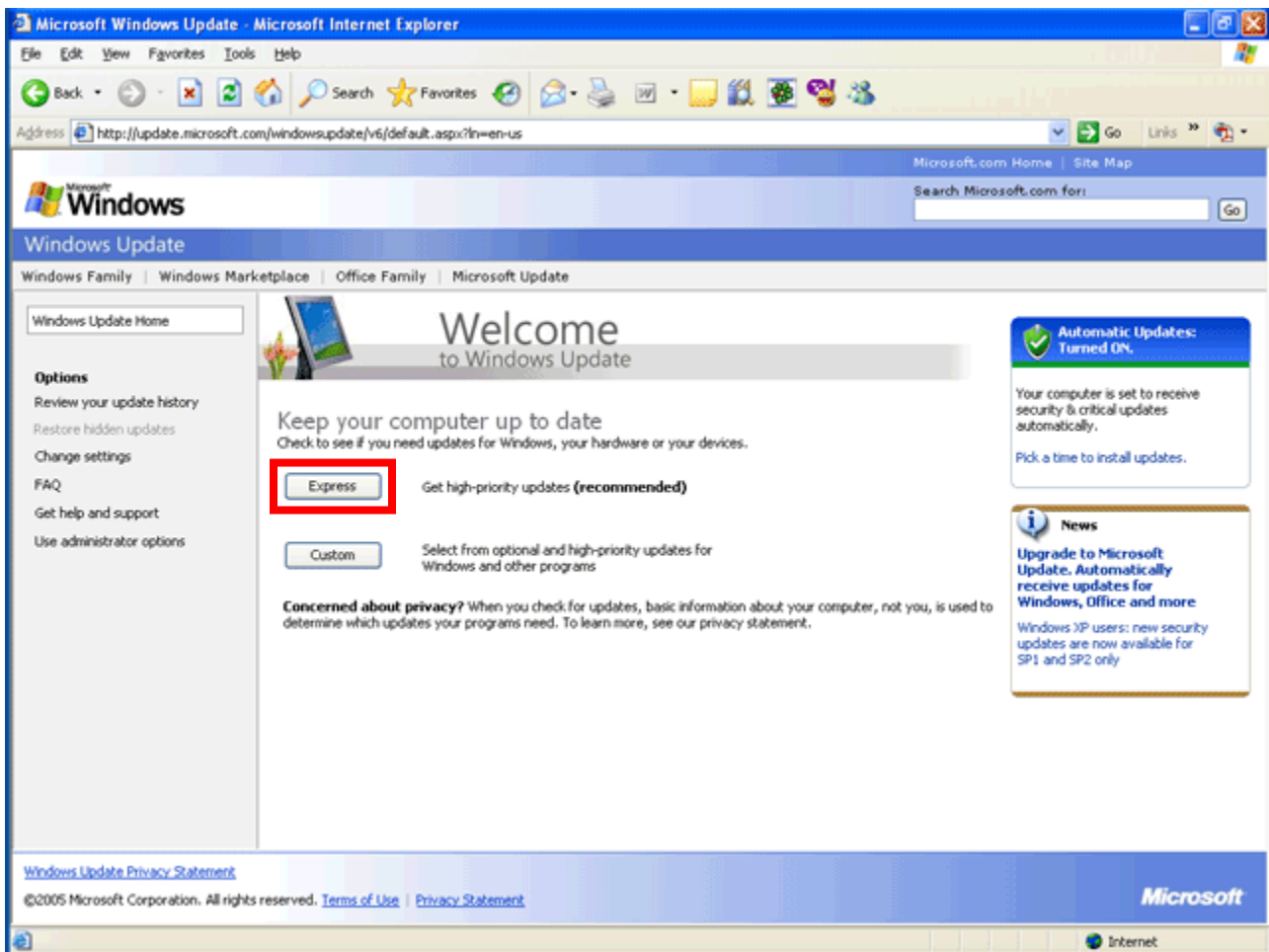
Installing Service Pack 3 for Windows XP can be done many different ways:

To install **Service Pack 3** from **CD-Rom**:

- 1) Insert the CD labeled **Laptop Requirements 2008-2009** into the CD/DVD-Rom drive in your laptop
- 2) **Double Click My Computer** and then **your CD/DVD-Rom drive icon**. This is usually labeled as **D:** or **E:**
- 3) Double click the file called **WindowsXP-SP3.exe**
- 4) Follow the on-screen dialogue to install **Service Pack 3**
- 5) **Reboot** your computer when asked to
- 6) Return to **Page 1** to setup your wireless connection

To install **Service Pack 3** from **Windows Update** it will be best to have a **wired** connection.

- 1) Load up **Internet Explorer**
- 2) **Left Click** on **Tools** and then **Windows Update**
- 3) **Windows Update** will prompt you to choose **Left Click** the **Express** button as highlighted in **Red** in Fig. 9.



- 4) Follow the on-screen directions to install **Service Pack 3**
- 5) **Reboot** your computer at the end of installation
- 6) Return to **Page 1** to setup your wireless connection